

Japanese Paper, Lacquer and Knives
Get Close the Ancient Crafts in Fukui

Capacity: 40



Echizen Paper Making Experience

Fukui Prefecture is one of the few areas of Japan where many artisans with the finest craftsmanship are still producing various traditional handmade goods. This tour will visit factories of Echizen *washi* Japanese paper, Echizen forged blades, and Echizen lacquerware, which are all designated as traditional craftworks, to learn about traditional techniques passed down through generations and the master craftsmanship of artisans. You are invited to have a go at making *washi* paper at the Echizen Washi Village, and enjoy a factory tour and shopping at the Echizen Lacquerware Hall and Takefu Knife Village.

Itinerary

※Itinerary is subject to change without notice.

8:00	Meet at Kyoto Station Hachijo-guchi Reserved Bus Platform == Chartered bus ==
10:30-12:30	Echizen Paper Village: Paper Making Experience === Chartered bus ===
12:40-13:30	Lunch at a soba noodle restaurant === Chartered bus ===
13:50-15:00	Echizen Lacquerware Cooperative === Chartered bus ===
15:20-16:00	Takefu Knife Village === Chartered bus ===
18:30	Tour ends at Kyoto Station

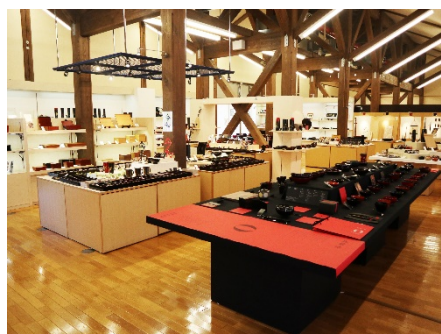
Echizen Paper Village: Echizen has a 1500 year paper making heritage and is known to have some of the highest quality and craftsmanship in Japan. The village has a 230-meter main street where many of the shops, factories and facilities for experiencing papermaking are concentrated. It is a beautiful place, where tradition and nature meet.

Echizen Lacquerware Traditional Industry Hall: Devoted to sharing the history and technology of Echizen lacquerware, more than 1,000 products are exhibited and sold at the museum shop, and you can see a demonstration by a traditional craftsman in the traditional workshops here.

Takefu Knife Village: Looking forward and back, the craftspeople in Takefu will demonstrate the traditional skills of knife making, and their contemporary designs and inspiration.



Echizen Paper Village



Echizen Lacquerware Cooperative



Takefu Knife Village