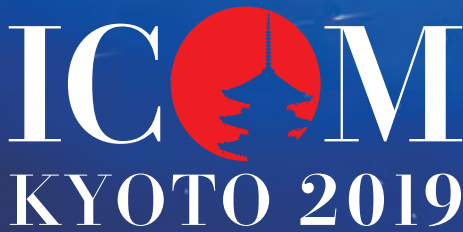




# Challenges facing local museums in preserving and handing down history and culture



## ICOM KYOTO 2019 Post-Conference Programme in Hokkaido

Date: Sunday, September 8 – Tuesday, September 10, 2019

Venue: Date City, Toyako Town, Shiraoi Town and Biratori Town (Hokkaido Prefecture)

[www.ec-pro.co.jp/icomkyoto2019postconference/](http://www.ec-pro.co.jp/icomkyoto2019postconference/)

Organisers: ICOM KYOTO 2019 Organising Committee, Date Toyako Regional Museum Promotion Platform

Managed by Organising Committee for the ICOM KYOTO 2019 Post-Conference Programme in Date City and Toyako Town, Hokkaido Prefecture

### Symposium Monday 9 September 1:30 pm - 5:30 pm

Venue: Date Rekishi-no-Mori Culture Center (Matsugae-cho 34-1, Date, Hokkaido)

Japanese-English simultaneous interpretation available

#### Opening Remarks

Guest Speech (Suay AKSOY, ICOM President)

#### Keynote speech:

**Regional Museums I Have Seen** (tentative)

Irena ŽMUC

Chairperson, ICR (International Committee for Regional Museums)

#### Keynote speech:

**Archaeological Sites and Museums** (tentative)

Myriame MOREL-DELEDALLE

Chairperson, ICMAH (International Committee for Museums and Collections of Archaeology and History)

#### Special speech:

**Endeavors of a Local Museum** (tentative)

Toshikazu SASAKI

Visiting professor, Hokkaido University Center for Ainu and Indigenous Studies

#### Panel Discussion:

#### The Role of Museums to Bring Together Regional Treasures

The panel will explore issues of regional museums in terms of their operation, visitor attraction and the protection and utilization of collections, with a particular focus on the sustainability and ideals of regional museums as well as their efforts to preserve and transmit regional culture and traditions to future generations.

#### Moderator

Shuzo ISHIMORI, President, Hokkaido Museum Association

#### Panelists

Irena ŽMUC, Chairperson, ICR

Myriame MOREL-DELEDALLE, Chairperson, ICMAH

Toshikazu SASAKI, Visiting professor, Hokkaido University Center for Ainu and Indigenous Studies

Noboru SAKAMOTO, Assistant Director, Itami City Museum of Insects

Naoaki ISHIKAWA, Director, Otaru Museum



Suay AKSOY  
ICOM President



Irena ŽMUC  
Chairperson, ICR



Myriame MOREL-DELEDALLE  
Chairperson, ICMAH



Toshikazu SASAKI  
Visiting professor  
Hokkaido University Center for  
Ainu and Indigenous Studies



Noboru SAKAMOTO  
Assistant Director  
Itami City Museum of  
Insects



Naoaki ISHIKAWA  
Director  
Otaru Museum



Shuzo ISHIMORI  
President  
Hokkaido Museum  
Association

## SPEAKERS

**Irena ŽMUC**  
Chairperson, ICR

She graduated from the Faculty of Arts in Ljubljana in 1979, and received Ph.D. from the Faculty of Arts Ljubljana (history). Voting member of ICOM/ICR since 1991. Since 1980 has been working as a curator in Museum and Galleries of Ljubljana, professional title Museum Councillor; interested in history of Early Modern Age (1500-1850).

**Noboru SAKAMOTO**  
Assistant Director, Itami City Museum of Insects

He is a curator and assistant director at the Itami City Museum of Insects. He has launched various educational programmes and established the Association for the Friends of the Museum in addition to breeding insects as a curator in charge of education. He has also been in charge of organizing themed exhibitions and the Singing Insects and Gocho event, which is annually held in collaboration with the local community. He has received a Tanahashi Award from the Japan Association of Museums and an Outstanding Exhibition Award and Research Paper Award from the Japan Society for Exhibition Studies.

**Myriame MOREL-DELEDALLE**  
Chairperson, ICMAH

Historian and Archaeologist. After her cursus at Tunis (Tunisia University), she received her PhD in History at Paris I-Sorbonne University (1971). Actually (2018) Chief Curator, she curated several exhibitions for the Mucem (National Museum of European and Mediterranean Civilisations), Marseilles, France : « Splendeurs de Volubilis », « Migrations divines », « Galerie de la Méditerranée/ Connectivités » and « L' or ».

**Naoaki ISHIKAWA**  
Director, Otaru Museum

He specializes in archaeology and cultural history. He was an investigator in the Doshisha University Campus Academic Survey Committee, a lecturer at the Doshisha University Faculty of Letters, a researcher at the Tokushima Prefectural Archaeological Operations Center and a curator at the Otaru City Board of Education. He received a Museum Activity Award from the Japan Association of Museums in 2013. He also serves as vice president of the Hokkaido Museum Association and vice chair of the Hokkaido Archaeological Society.

**Toshikazu SASAKI**

Visiting professor, Hokkaido University Center for Ainu and Indigenous Studies

He received his Ph.D. from Waseda University. He has been a member of the government's Council for Ainu Policy Promotion since 2010. Before assuming this post, he was director of the Ethnological Archives Office in the Archives Division at the Curatorial Department of the Tokyo National Museum, a senior cultural properties specialist at the Fine Arts Division in the Cultural Properties Department of the Agency for Cultural Affairs, and a professor at the Department of Advanced Studies in Anthropology of the National Museum of Ethnology. He also served as chair of the Advisory Committee for the Date City Museum of History and Culture until March 2019.

**Shuzo ISHIMORI**  
President, Hokkaido Museum Association

He is a former professor of the National Museum of Ethnology(NME) and a former director of the Research Center for Cultural Resources of the NME, also a former professor of the Graduate University for Advanced Studies and of the Graduate School at Hokkaido University. At present, a director-general of Hokkaido Museum and a distinguished visiting professor at the Center for Advanced Tourism Studies of Hokkaido University. He is also a chairperson of the Council for Hokkaido Heritages. He received the Commissioner's Award for the Promotion of Cultural Tourism from the Agency for Cultural Affairs of the government.

## TECHNICAL VISIT



(i) Nibutani Ainu Culture Museum (Biratori Town)



(ii) Kitakogane Shell Midden (Date City)



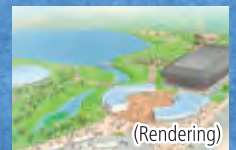
(iii) Date City Museum of History and Culture (Date City)



(iv) Irie and Takasago Shell Midden (Toyako Town)



(v) Toyako Visitor Center / Volcano Science Museum (vi) Disaster Monuments at Konpira Craters (Toyako Town)



(vii) National Ainu Museum / National Park for Ethnic Harmony (planned construction site) (Shiraoi Town)

### Registration fee

type A:35,000 JPY (Single Room)  
type B:30,000 JPY (Shared room for two)

Notes:  
The above registration fees also apply to accompanying persons.  
Register and make a payment online via the website.

### Items included in the registration fee

- (i) Transport during the event
- (ii) Facility admissions
- (iii) Meals

Date	Breakfast	Lunch	Dinner
Sunday the 8th	—	—	○
Monday the 9th	○	○	Welcome party
Tuesday the 10th	○	○	—

- (iv) Accommodation (Shared with your colleague(s))
- (v) Welcome party

### Items NOT included in the registration fee

- (i) Transport outside Hokkaido before arriving at and after leaving New Chitose Airport (airfare, etc.)
- (ii) Additional orders placed during meals (e.g., alcoholic beverages), excluding during the welcome party
- (iii) Souvenirs purchased

### Expected Participants

#### Symposium

- (i) Participants of the post-conference programme
- (ii) Those involved in museums in Hokkaido
- (iii) Date City residents and other local residents

#### Technical visit

Participants of the post-conference programme

#### Welcome party

- (i) Participants of the post-conference programme
- (ii) Those involved in museums in Hokkaido
- (iii) Representatives of local entities concerned

#### Other

- (i) Please arrange your own transport to and from New Chitose Airport.
- (ii) Buses will be arranged for the technical visits.
- (iii) English-speaking guides and explanations in English will be provided during the whole programme. (Interpretation services, etc.)
- (iv) A "certificate of attendance" will be issued to participants.
- (v) The programme content is subject to change.

### Schedule (As of May 2019)

	Day 1 / Sunday, Sep 8	Day 2 / Monday, Sep 9	Day 3 / Tuesday, Sep 10
<b>Morning</b>		<b>Technical visit</b> (ii) Kitakogane Shell Midden (iii) Date City Museum of History and Culture	<b>Technical visit</b> (iv) Irie and Takasago Shell Midden (v) Toyako Visitor Center / Volcano Science Museum (vi) Disaster Monuments at Konpira Craters
<b>Afternoon</b>	Meet at 1pm in New Chitose Airport <b>Technical visit</b> (i) Nibutani Ainu Museum	<b>Symposium</b> Date Rekishi-no-Mori Culture Center <b>Accompanying persons' programme</b> (This is only for those interested in participating. Participation is not mandatory. The program is subject to fees.)	<b>Technical visit</b> (vii) National Ainu Museum / National Park for Ethnic Harmony (planned construction site) The tour ends at 3:50pm in New Chitose Airport.
<b>Dinner</b>	Accommodations	<b>Welcome party</b>	
<b>Accommodations</b>	The Toyako Onsen hot spring resort	The Toyako Onsen hot spring resort	

<https://www.ec-pro.co.jp/icomkyoto2019postconference/>

Contact at the Seceriat Office(c/o EC Pro Inc.)

email: icom2019post@ec-pro.co.jp

This programme is granted by the ITOGUMI FOUNDATION and Toshiba International Foundation.



**TOSHIBA**